

# Lipoderma<sup>®</sup>

Restore What's Yours

A first-of-its-kind, like-for-like **natural fat restoration solution** designed to address the loss of dermal white adipose tissue ("good fat") that supports skin health. It restores the foundation beneath the skin while integrating seamlessly with native tissue to support a natural, youthful-looking appearance.



Available in 1.5 and 10 cc units

## ADIPOSE TECHNOLOGY YOU CAN TRUST

Built on 30+ years of regenerative medicine expertise

**650+**  
PATIENTS

**200+**  
CLINICIANS

**2+**  
YEARS OF DATA

**0**  
ADVERSE EVENTS

Post-GLP-1 Weight Loss Application  
(4.5 cc in the midface and jawline)



Photos courtesy of Michelle Beccio, FNP-BC

Hip Dip Correction  
(15.0 cc in each buttock)



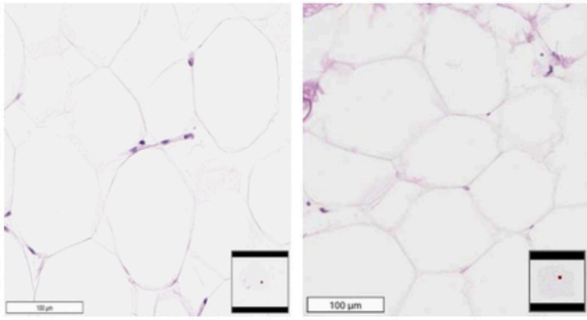
Photos courtesy of Rian Maercks, MD

**Britecyte<sup>®</sup>**

4985 Winchester Blvd  
Frederick, MD 21703

lipoderma.com  
brighterlives@britecyte.com

LD-01 Rev 03



Native Adipose Tissue

Lipoderma

H&E-stained human adipose tissue samples at 20x magnification

## The Only Adipose Allograft that Retains Key Structural & Biological Components

- Intact adipocytes
- Extracellular matrix
- Signaling molecules

## Manufactured for Safety and Consistency

- Manufactured in partnership with LifeLink Tissue Bank, in compliance with all applicable FDA regulations and AATB standards
- Tissue is recovered from eligible donors, tested per 21 CFR 1271, and processed aseptically (non-irradiated) using Britecyte's proprietary, patent pending method
- Final sterility testing is performed in accordance with USP <71> guidelines

## Backed by Peer-Reviewed Data\*

- Allografts remain in place and do not resorb
- Allografts integrate with host tissue
- New blood vessel formation as early as 3 days

Visual appearance of Lipoderma at different time points after subcutaneous implantation in rats



\*Regulski et al., Plast Reconstr Surg Glob Open 2024



4985 Winchester Blvd  
Frederick, MD 21703

lipoderma.com  
brighterlives@britecyte.com

LD-01 Rev 03